

The following information describes the English



Features:

- ★ Supporting Mach4 Hobby version
- ★ Support spindle speed feedback
- ★ Full support for USB hot-swappable, the card is Monitoring
- ★ USB connection status at any time.
- ★ Supports Up 6-axis,support differential output

Maximum step-pulse frequency is 2000KHz

- ★ Status indicator LED can be useful to show the USB
- ★ connection, and working status by flashing.

16 general-purpose input

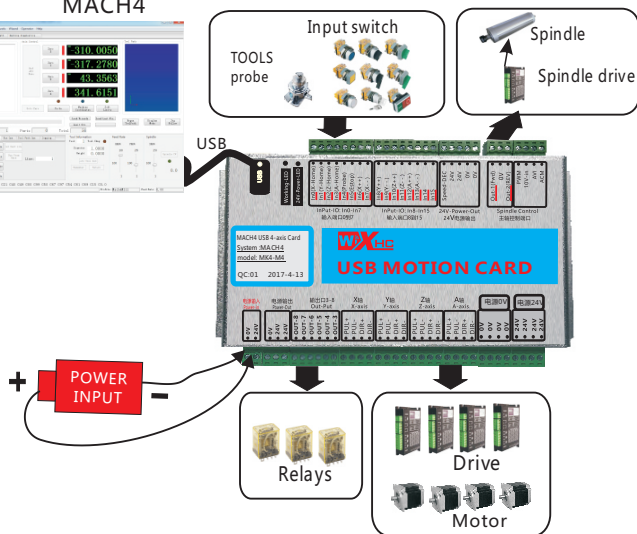
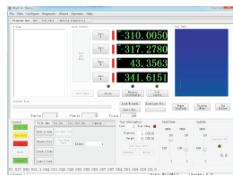
- ★ has speed function, the spindle actual speed Mach4
- interface in real-time display

- ★ all IO-port isolation, interference, stable performance

Application Connection Diagram

USB Motion Control Card Application

MACH4

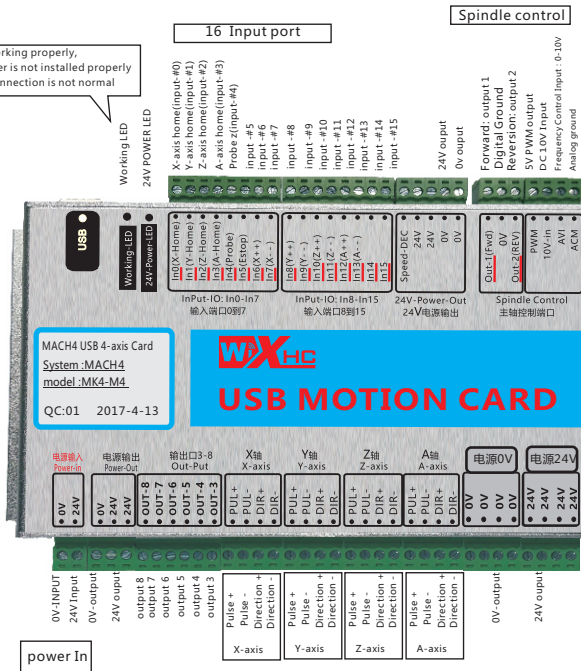
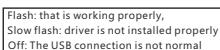


Support: 3-axis or 4-axis, or 6-axis

Mk3-M4: 3-axis; Mk4-M4: 4-axis; Mk6-M4: 6-axis

第2部份：英文介绍/ English Introduction

Signal Description

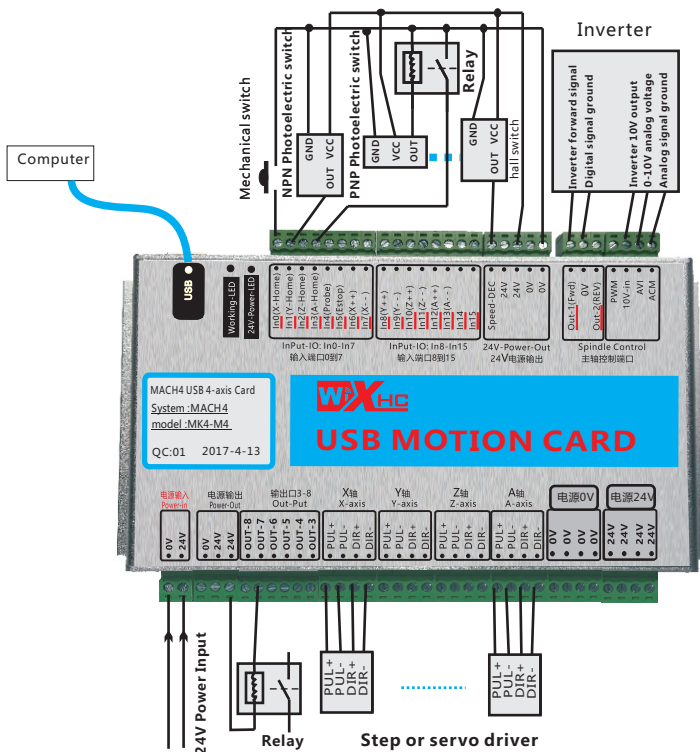


第2部份：英文介绍/ English Introduction

Wiring diagram shows

NOTE: If the inverter is turned on, the control card is not working properly because of interference caused by the inverter; Replace inverter.

Input IO Connect Mechanical switch or NPN (PNP) Photoelectric switch
Input signal must be active low



第2部份：英文介绍/ English Introduction

Electrical Characteristics

	Parameter Description	
axis output control:	Drive Current	Isolated open collector output; 5V, 20mA
	Drive	Pulse + direction output
	Output frequency	2000KHZ
	axes	MK3-M4:3-axis;MK4-M4:4-axis;MK6-M4:6-axis
	Isolation Voltage	3.5KV
Spindle inverter output: 3 types of output modes	Analog voltage output	0—10V
	PWM output	5V,1KHZ, Duty;0-100%
	Pulse+direction output	5V,15HZ to 4KHZ
8 IO output	Drive Current	Isolation:50mA, 25V
	Isolation Voltage	3.5KV
16 IO input	Input Current	Isolated inputs, 5 mA, maximum voltage 25V
	Isolation Voltage	3.5KV
USB interface	Complies with USB2.0 standard	

附件1：软件安装说明 Software installation

软件安装

- 第1步：安装MACH4软件.点击Mach4Hobby Installer-4.2.0.2914.exe 然后点next 下一步完成安装.

No.1: Install MACH4 software, Open Mach4Hobby Installer-4.2.0.2914.exe. click next till to finish.

- 第2步：拷贝MACH4 配置文件中的plugins 和profiles到MACH4安装目录.替换原来的文件.

No.2: Copy MACH4 config files plugins and profiles to MACH4 install directory, replace all files.

- 第3步：参见接线图，将控制卡连线正确

No.3: See wiring diagram, which will control the card connection correctly

- 第4步：用USB线将控制卡和电脑连接起来.等待计算机安装USB驱动完成.

No.4: Connect the control card and computer with the USB line.

- 第5步：打开MACH4, wxMach.exe,选择mach4mill.点“ configure-> mach” ,在motors窗口,设电机参数.每个轴参数设置好后,点Apply保存.当电机移动方向反时,可以把Reverse打勾.

No.5: Open wxMach.exe, choose mach4mill. Click “ configure-> mach” , in the motors window, set the motor parameters. Finish settings, click Apply to save. click “revrese” when motor moving reverse.

- 第6步：完成以上配置后,就可以在MACH4 /joging窗口中点x+,y-等调试运行机器了.

No.6: Finish above settings, you could move motor by x+, y- to debug your motor in the jogging window.

附件：接线图(Annex 2:Wiring schematics)

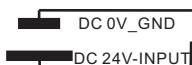
应用接线图

MKX Wiring schematics

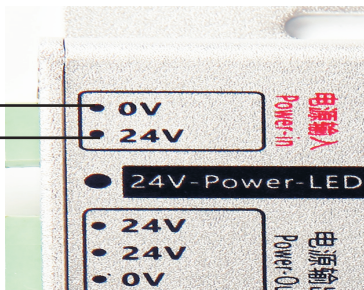
1.第1步，给控制卡接上电源线

NO.1 : power input

power : 24V,1A



使用控制卡前，需要给控制卡提供电源
直流24V；工作电流1A



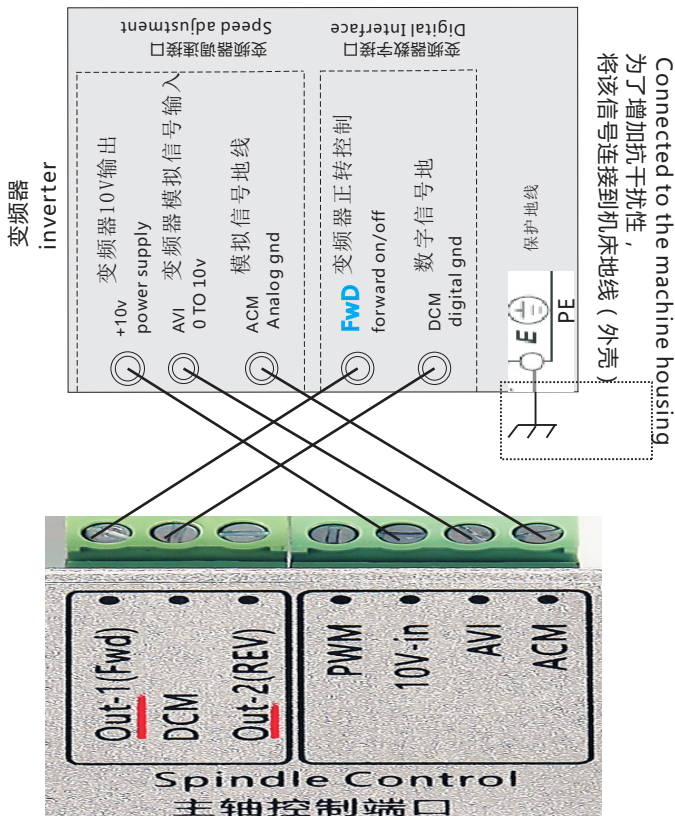
2.第2步：驱动器连接：支持伺服或步进驱动器，差分输出接法,各品牌驱动器接法详见<接线图>

NO.2 : Drive Interface : Supporting servo or stepping drive

All kinds of brand drive wiring see wiring diagram

3.第3步：主轴控制-变频器连接

NO.3 : Inverter Interface

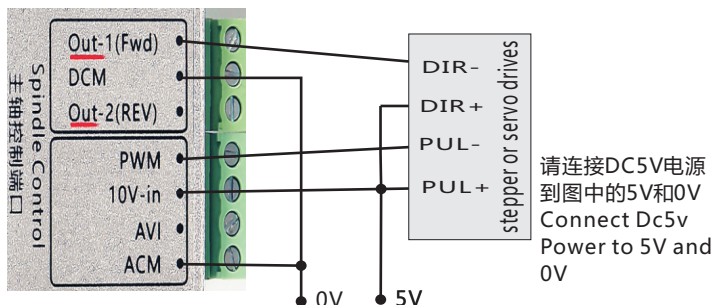


应用接线图

MXK Wiring schematics

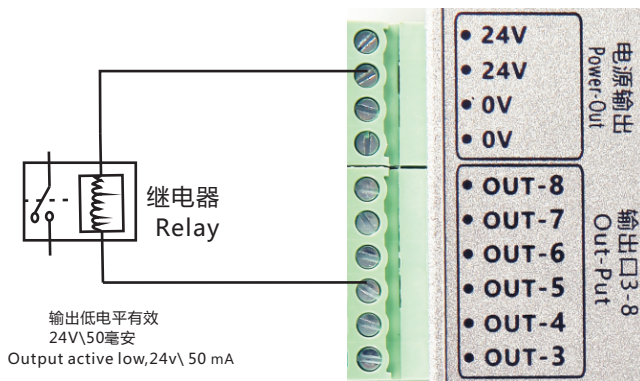
主轴控制：步进或伺服驱动器

Spindle connected stepper or servo drives



4.第4步：输出口 继电器连接：OUT3到OUT8连接继电器方式

NO.4：Relay Interface：OUT3 to OUT8 Relay Interface



5.第5步：16个输入口IN0-IN15接法：限位开关等接口：输入低电平有效

NO.5：input Interface：16 input port;In0 to In15.Active Low

